

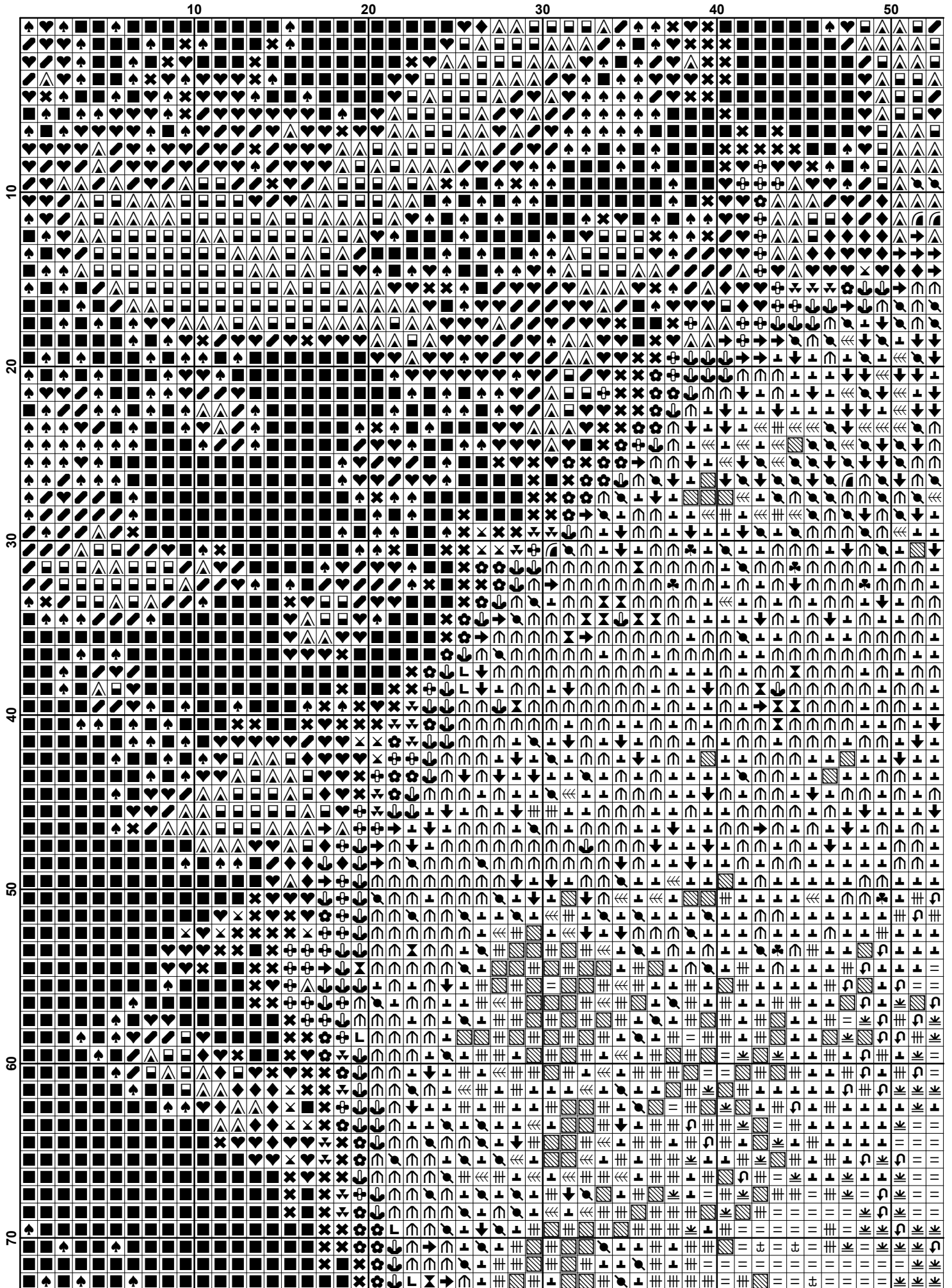
Free Cross Stitch Charts

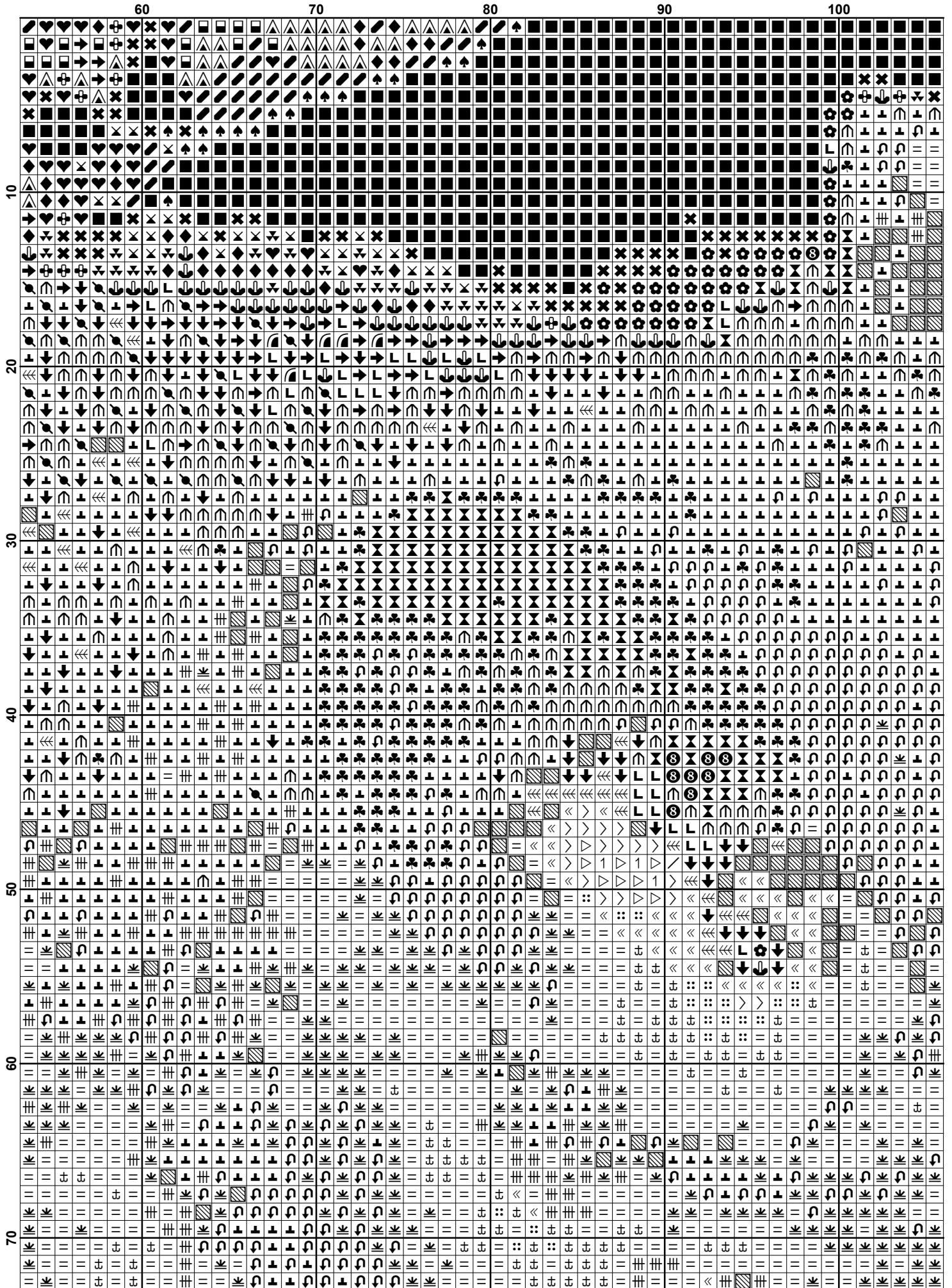
Two Doormice

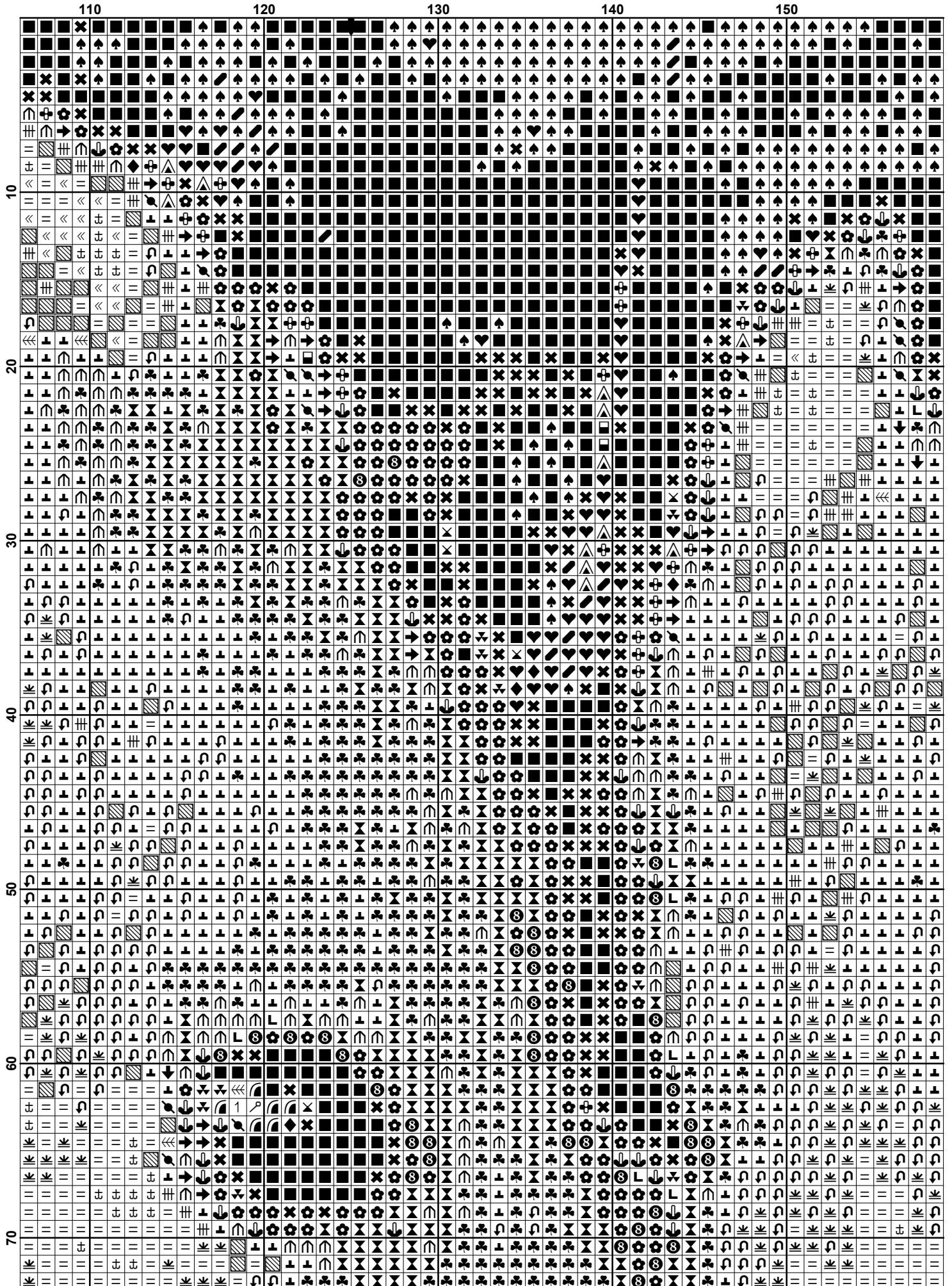


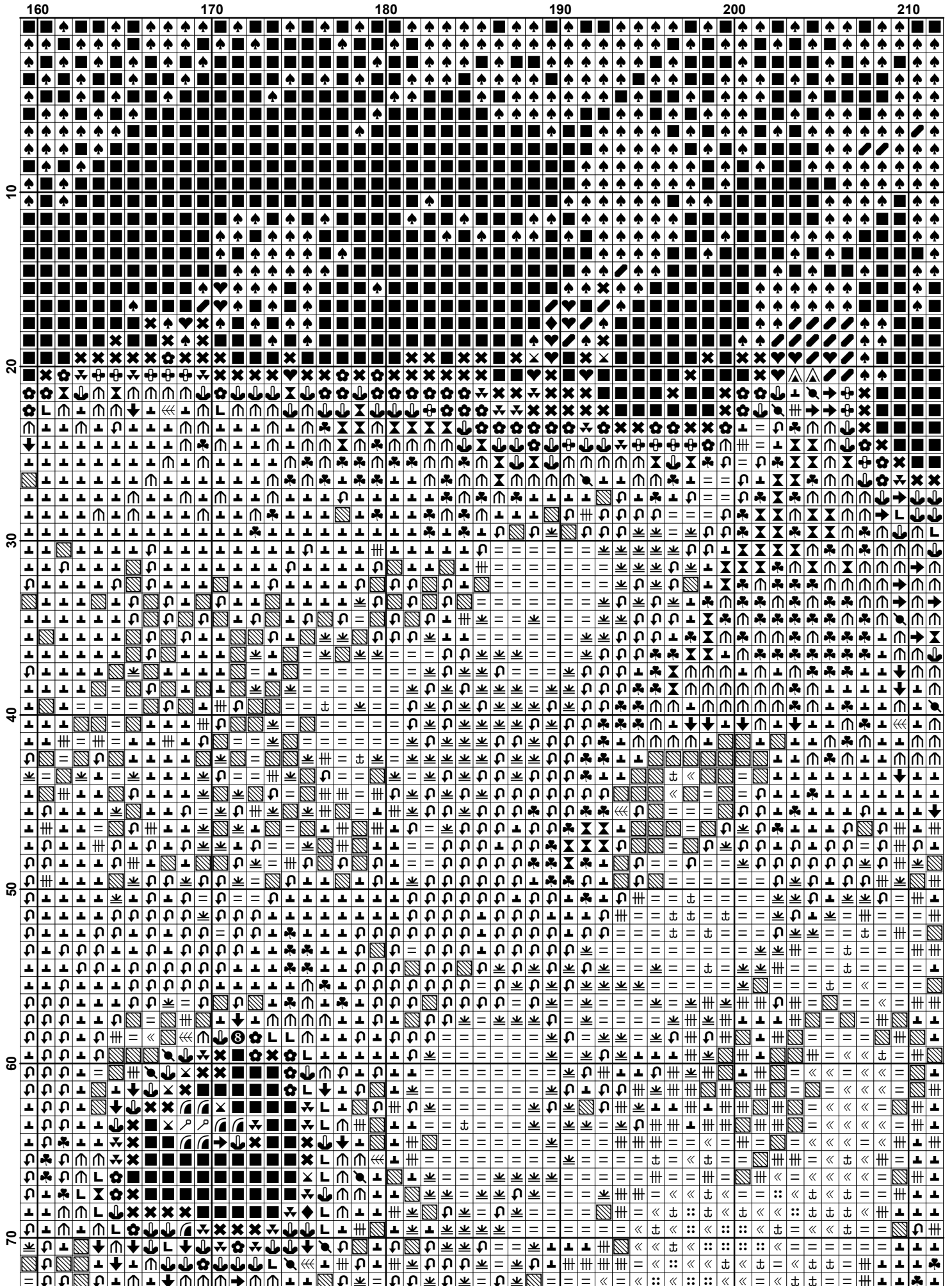
This cross stitch pattern is strictly for personal use only. Please respect my copyright.

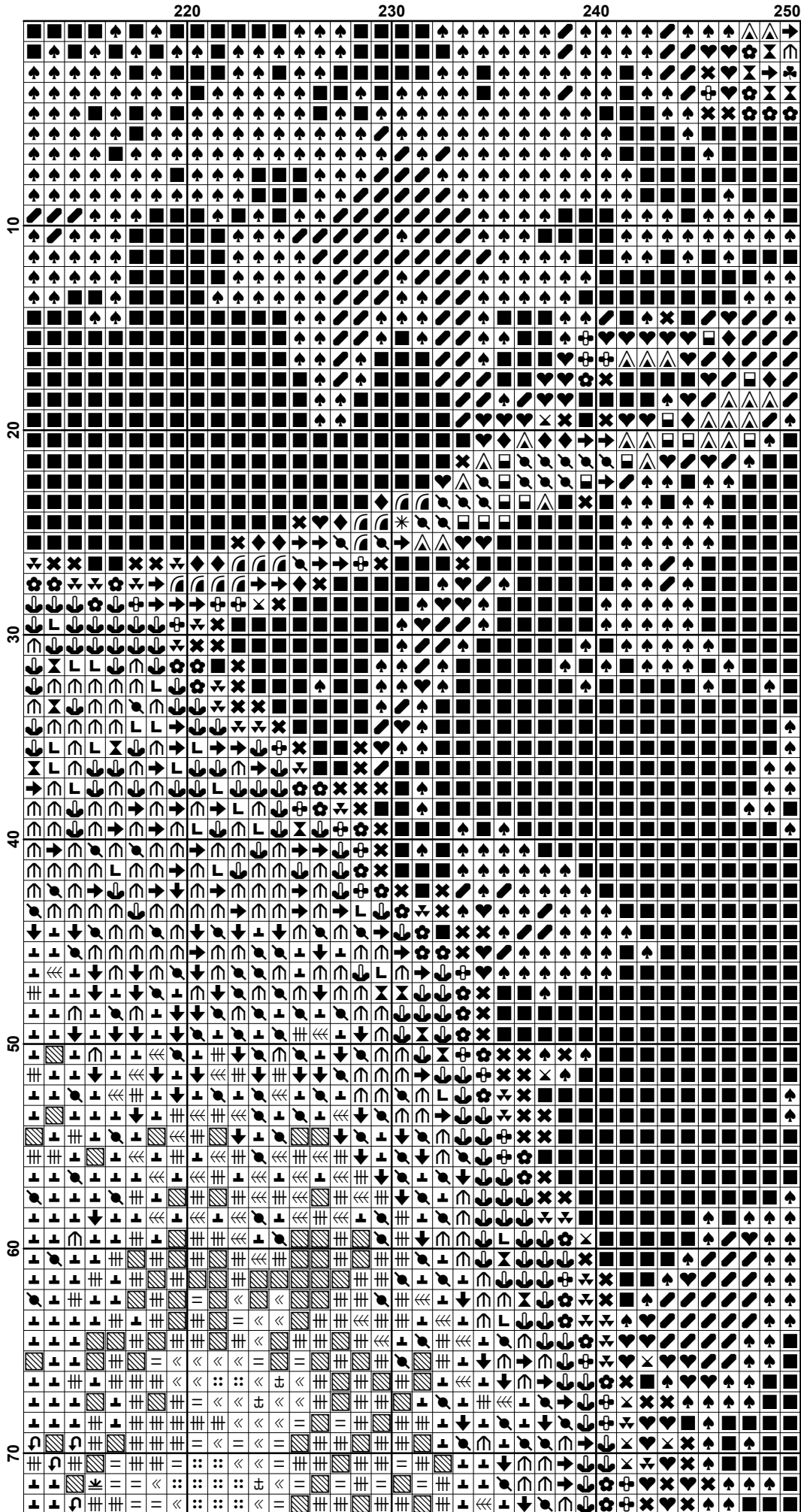
www.freecrossstitchcharts.com

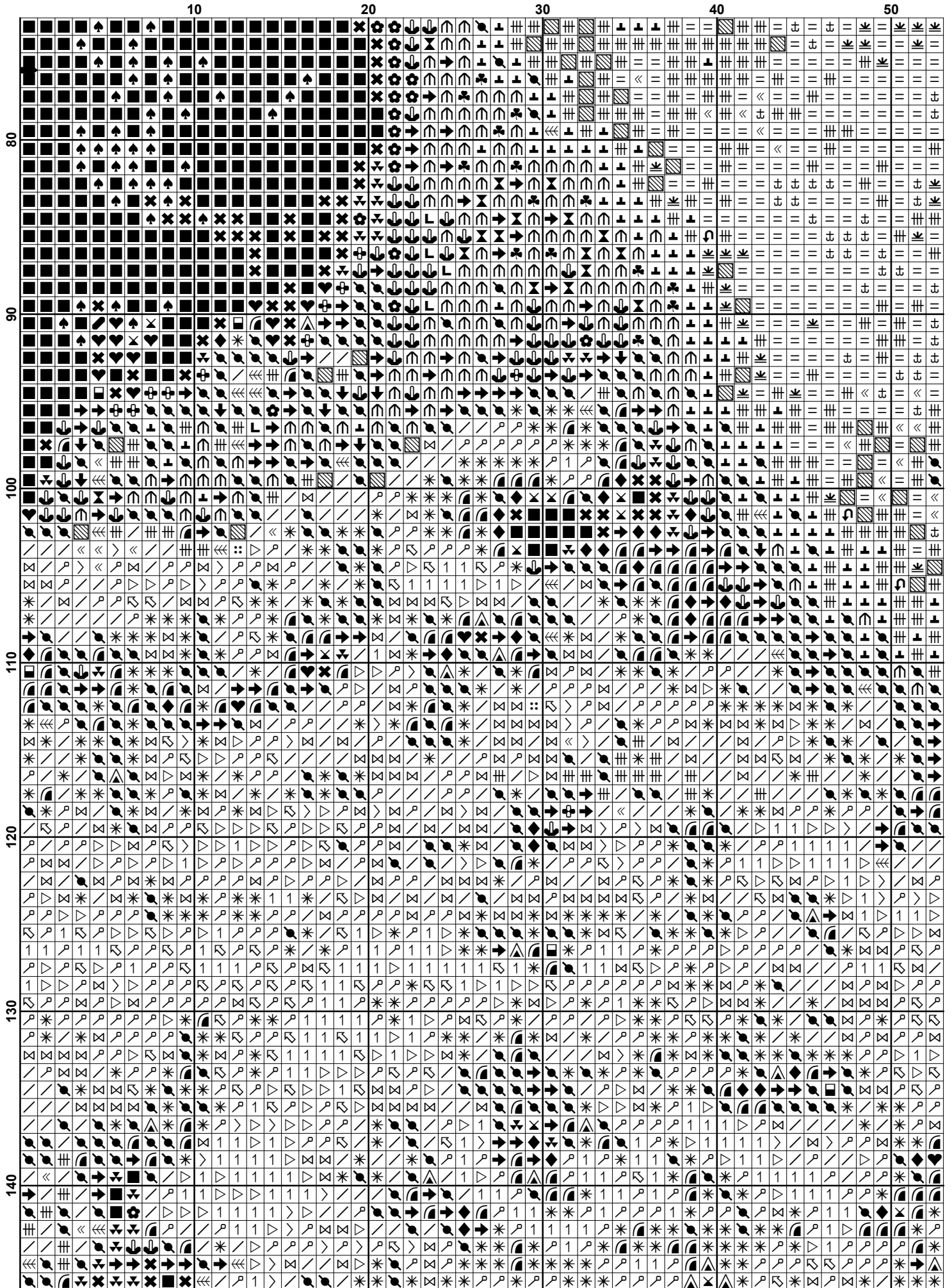


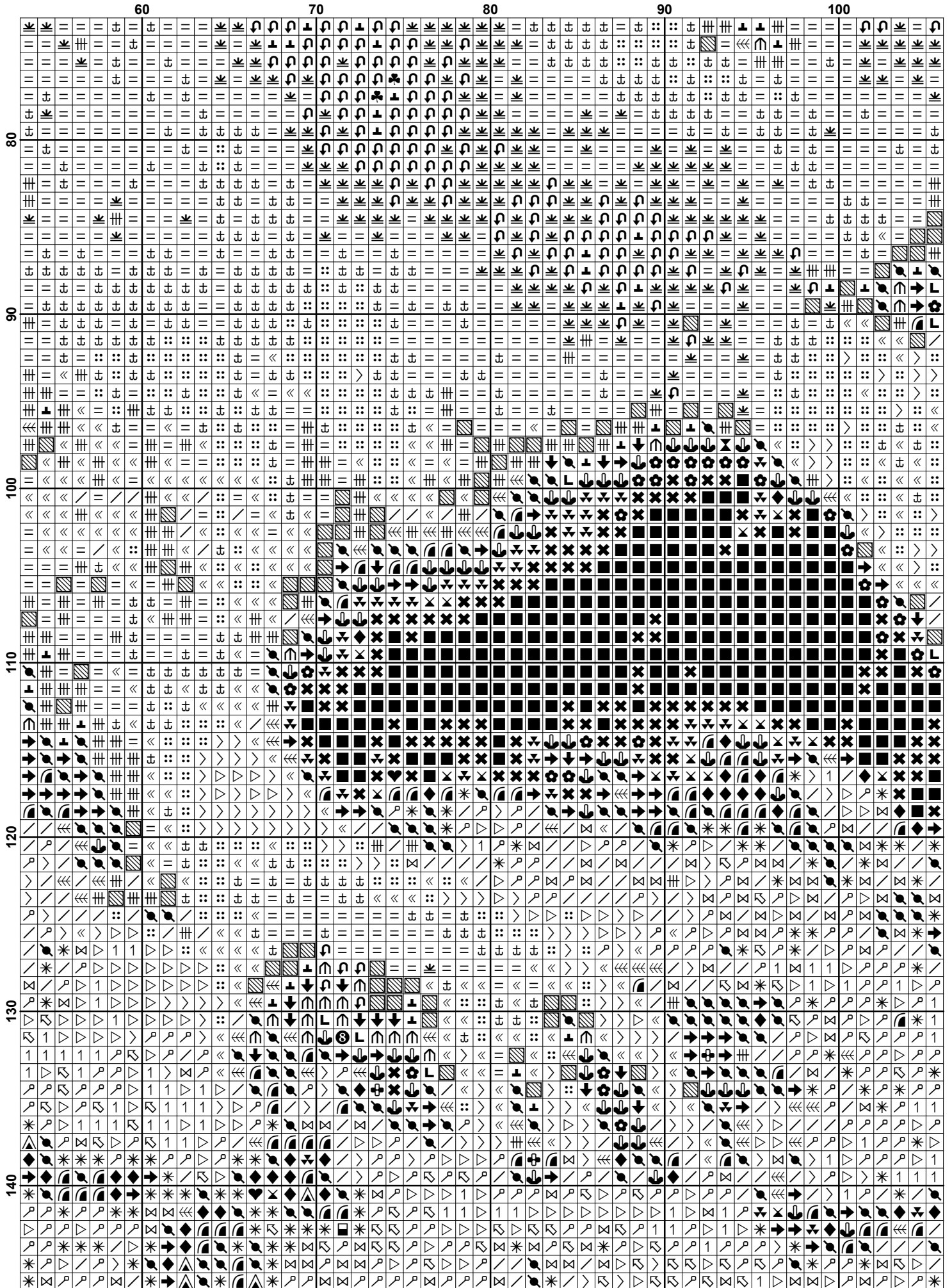


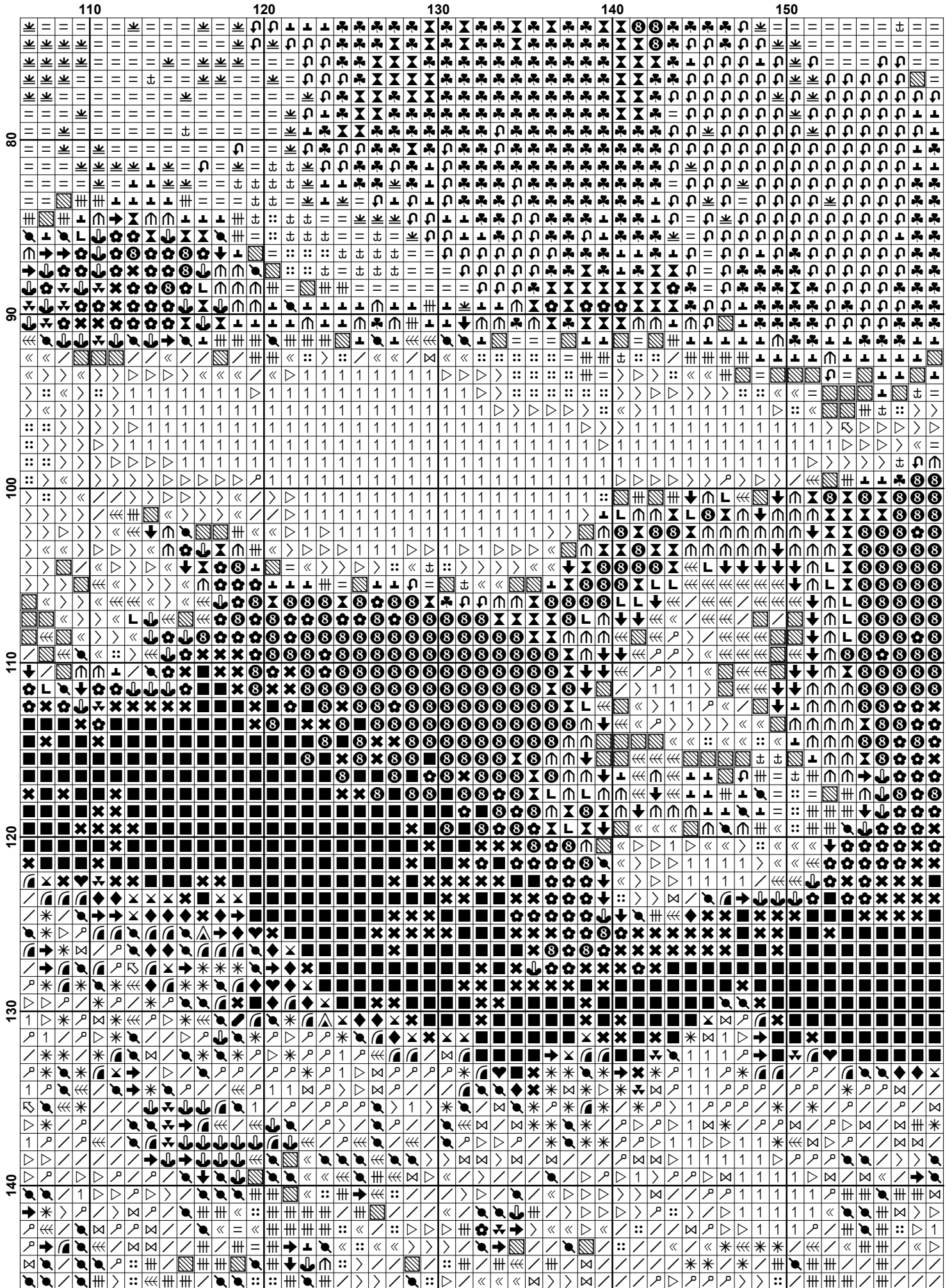




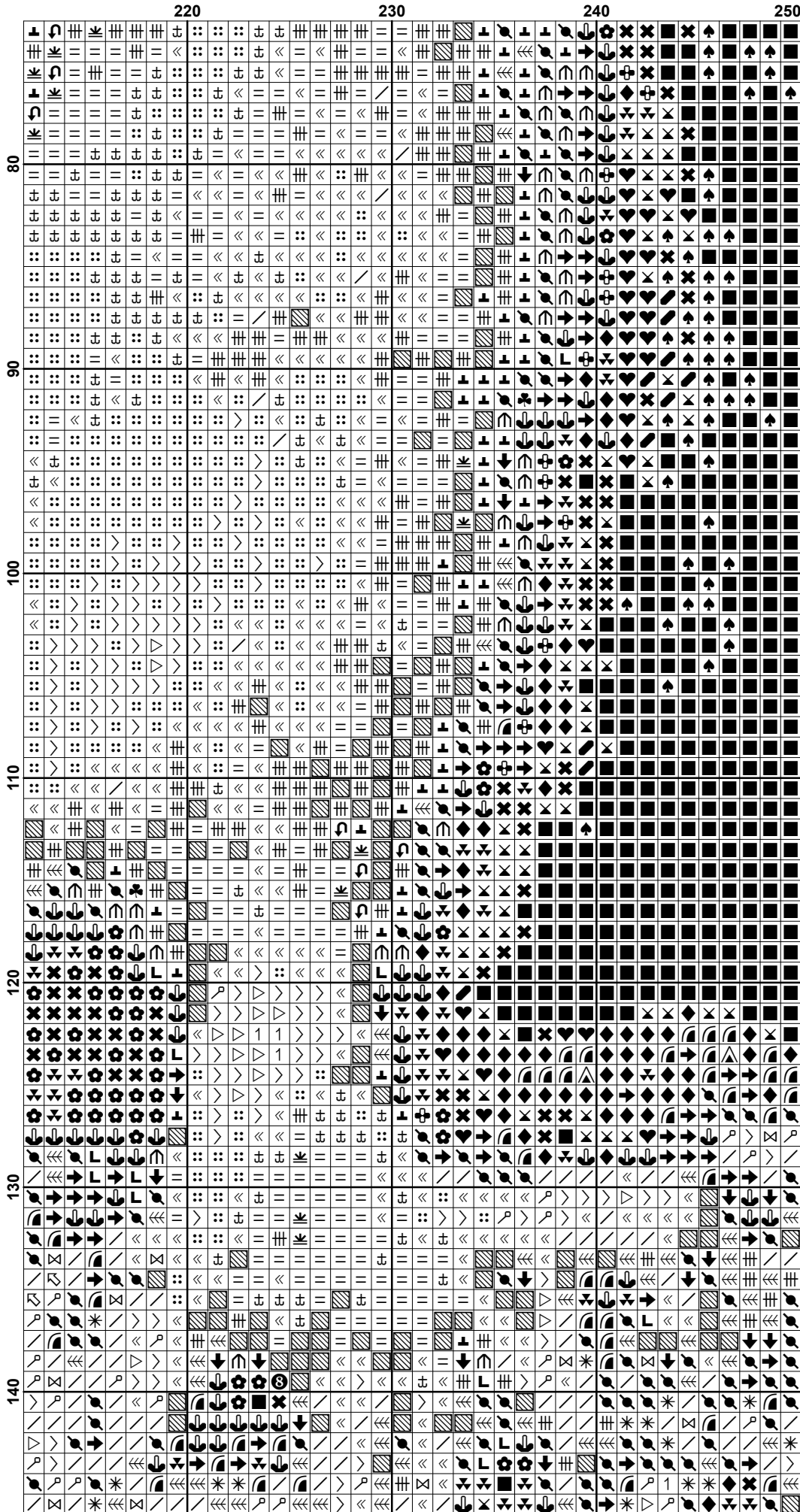






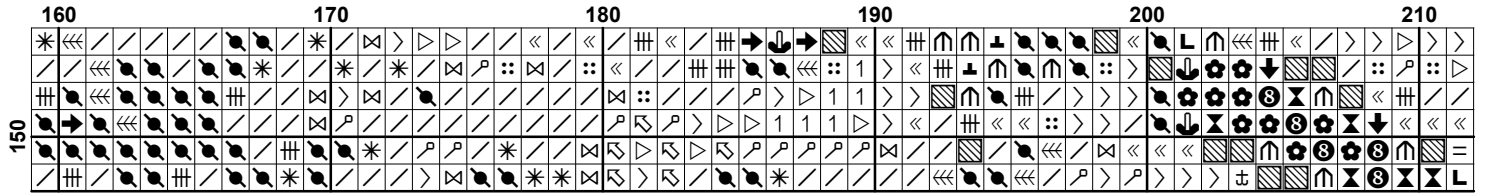


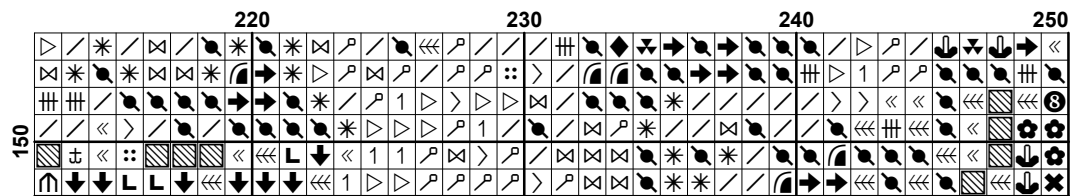




	10										20										30										40										50																			
150	☐	☐	☐	☐	☐	☐	☐	☐	☐	☐	☐	☐	☐	☐	☐	☐	☐	☐	☐	☐	☐	☐	☐	☐	☐	☐	☐	☐	☐	☐	☐	☐	☐	☐	☐	☐	☐	☐	☐	☐	☐	☐	☐	☐	☐	☐	☐	☐	☐	☐	☐	☐	☐	☐	☐	☐	☐	☐	☐	☐
	☐	☐	☐	☐	☐	☐	☐	☐	☐	☐	☐	☐	☐	☐	☐	☐	☐	☐	☐	☐	☐	☐	☐	☐	☐	☐	☐	☐	☐	☐	☐	☐	☐	☐	☐	☐	☐	☐	☐	☐	☐	☐	☐	☐	☐	☐	☐	☐	☐	☐	☐	☐	☐	☐	☐	☐	☐	☐	☐	☐
	☐	☐	☐	☐	☐	☐	☐	☐	☐	☐	☐	☐	☐	☐	☐	☐	☐	☐	☐	☐	☐	☐	☐	☐	☐	☐	☐	☐	☐	☐	☐	☐	☐	☐	☐	☐	☐	☐	☐	☐	☐	☐	☐	☐	☐	☐	☐	☐	☐	☐	☐	☐	☐	☐	☐	☐	☐	☐	☐	☐
	☐	☐	☐	☐	☐	☐	☐	☐	☐	☐	☐	☐	☐	☐	☐	☐	☐	☐	☐	☐	☐	☐	☐	☐	☐	☐	☐	☐	☐	☐	☐	☐	☐	☐	☐	☐	☐	☐	☐	☐	☐	☐	☐	☐	☐	☐	☐	☐	☐	☐	☐	☐	☐	☐	☐	☐	☐	☐	☐	☐



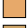












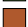
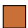






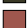
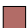


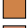


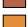









110										120										130										140										150									
↖	↗	*	⦿	⦿	⦿	⦿	⦿	⦿	⦿	⦿	⦿	⦿	⦿	⦿	⦿	⦿	⦿	⦿	⦿	⦿	⦿	⦿	⦿	⦿	⦿	⦿	⦿	⦿	⦿	⦿	⦿	⦿	⦿	⦿	⦿	⦿	⦿	⦿	⦿	⦿	⦿	⦿	⦿	⦿	⦿	⦿	⦿	⦿	⦿
↖	↗	⦿	⦿	⦿	⦿	⦿	⦿	⦿	⦿	⦿	⦿	⦿	⦿	⦿	⦿	⦿	⦿	⦿	⦿	⦿	⦿	⦿	⦿	⦿	⦿	⦿	⦿	⦿	⦿	⦿	⦿	⦿	⦿	⦿	⦿	⦿	⦿	⦿	⦿	⦿	⦿	⦿	⦿	⦿	⦿	⦿	⦿	⦿	⦿
↖	↗	⦿	⦿	⦿	⦿	⦿	⦿	⦿	⦿	⦿	⦿	⦿	⦿	⦿	⦿	⦿	⦿	⦿	⦿	⦿	⦿	⦿	⦿	⦿	⦿	⦿	⦿	⦿	⦿	⦿	⦿	⦿	⦿	⦿	⦿	⦿	⦿	⦿	⦿	⦿	⦿	⦿	⦿	⦿	⦿	⦿	⦿	⦿	⦿
↖	↗	⦿	⦿	⦿	⦿	⦿	⦿	⦿	⦿	⦿	⦿	⦿	⦿	⦿	⦿	⦿	⦿	⦿	⦿	⦿	⦿	⦿	⦿	⦿	⦿	⦿	⦿	⦿	⦿	⦿	⦿	⦿	⦿	⦿	⦿	⦿	⦿	⦿	⦿	⦿	⦿	⦿	⦿	⦿	⦿	⦿	⦿	⦿	⦿
↖	↗	⦿	⦿	⦿	⦿	⦿	⦿	⦿	⦿	⦿	⦿	⦿	⦿	⦿	⦿	⦿	⦿	⦿	⦿	⦿	⦿	⦿	⦿	⦿	⦿	⦿	⦿	⦿	⦿	⦿	⦿	⦿	⦿	⦿	⦿	⦿	⦿	⦿	⦿	⦿	⦿	⦿	⦿	⦿	⦿	⦿	⦿	⦿	⦿





Pattern Name: Two Dormice
Designed By: Free Cross Stitch Charts
Company: freecrossstitchcharts.com
Copyright: Free Cross Stitch Charts
Fabric: Aida 14, White
 250w X 152h Stitches
Size(s): 14 Count, 17-3/4w X 10-3/4h in
 16 Count, 15-5/8w X 9-1/2h in
 18 Count, 13-7/8w X 8-3/8h in
 22 Count, 11-1/4w X 6-7/8h in

Floss Used for Full Stitches:

Symbol	Strands	Type	Number	Color
	2	DMC	223	Shell Pink-LT
	2	DMC	300	Mahogany-VY DK
	2	DMC	402	Mahogany-VY LT
	2	DMC	436	Tan
	2	DMC	469	Avocado Green
	2	DMC	498	Christmas Red-DK
	2	DMC	524	Fern Green-VY LT
	2	DMC	580	Moss Green-DK
	2	DMC	613	Drab Brown-VY LT
	2	DMC	632	Desert Sand-UL VY DK
	2	DMC	754	Peach-LT
	2	DMC	772	Yellow Green-VY LT
	2	DMC	801	Coffee Brown-DK
	2	DMC	829	Golden Olive-VY DK
	2	DMC	842	Beige Brown-VY LT
	2	DMC	890	Pistachio Green-UL DK
	2	DMC	904	Parrot Green-VY DK
	2	DMC	920	Copper-MD
	2	DMC	921	Copper
	2	DMC	936	Avocado Green-VY DK
	2	DMC	938	Coffee Brown-UL DK
	2	DMC	951	Tawny-LT
	2	DMC	977	Golden Brown-LT
	2	DMC	3031	Mocha Brown-VY DK
	2	DMC	3051	Green Gray-DK
	2	DMC	3371	Black Brown
	2	DMC	3721	Shell Pink-DK
	2	DMC	3722	Shell Pink-MD
	2	DMC	3770	Tawny-VY LT
	2	DMC	3771	Terra Cotta-UL VY LT
	2	DMC	3776	Mahogany-LT
	2	DMC	3778	Terra Cotta-LT
	2	DMC	3825	Pumpkin-Pale
	2	DMC	3830	Terra Cotta-MD
	2	DMC	3853	Autumn Gold-DK
	2	DMC	3856	Mahogany-UL VY LT
	2	DMC	3860	Cocoa
	2	DMC	3862	Mocha Beige-DK
	2	DMC	3863	Mocha Beige-MD
	2	DMC	3864	Mocha Beige-LT

Usage Summary

Strands Per Skein: 6

Skein Length: 313.0 in

Type	Number	Full	Half	Quarter	Petite	Back(in)	Str(in)	Spec(in)	French	Bead	Skein Est.
DMC 223	464	0	0	0	0	0.0	0.0	0.0	0	0	1.000
DMC 300	757	0	0	0	0	0.0	0.0	0.0	0	0	1.000
DMC 402	2658	0	0	0	0	0.0	0.0	0.0	0	0	2.000
DMC 436	1402	0	0	0	0	0.0	0.0	0.0	0	0	1.000
DMC 469	240	0	0	0	0	0.0	0.0	0.0	0	0	1.000
DMC 498	495	0	0	0	0	0.0	0.0	0.0	0	0	1.000
DMC 524	706	0	0	0	0	0.0	0.0	0.0	0	0	1.000
DMC 580	317	0	0	0	0	0.0	0.0	0.0	0	0	1.000
DMC 613	509	0	0	0	0	0.0	0.0	0.0	0	0	1.000
DMC 632	756	0	0	0	0	0.0	0.0	0.0	0	0	1.000
DMC 754	612	0	0	0	0	0.0	0.0	0.0	0	0	1.000
DMC 772	186	0	0	0	0	0.0	0.0	0.0	0	0	1.000
DMC 801	359	0	0	0	0	0.0	0.0	0.0	0	0	1.000
DMC 829	164	0	0	0	0	0.0	0.0	0.0	0	0	1.000
DMC 842	970	0	0	0	0	0.0	0.0	0.0	0	0	1.000
DMC 890	1509	0	0	0	0	0.0	0.0	0.0	0	0	1.000
DMC 904	374	0	0	0	0	0.0	0.0	0.0	0	0	1.000
DMC 920	704	0	0	0	0	0.0	0.0	0.0	0	0	1.000
DMC 921	1002	0	0	0	0	0.0	0.0	0.0	0	0	1.000
DMC 936	509	0	0	0	0	0.0	0.0	0.0	0	0	1.000
DMC 938	1066	0	0	0	0	0.0	0.0	0.0	0	0	1.000
DMC 951	552	0	0	0	0	0.0	0.0	0.0	0	0	1.000
DMC 977	1066	0	0	0	0	0.0	0.0	0.0	0	0	1.000
DMC 3031	203	0	0	0	0	0.0	0.0	0.0	0	0	1.000
DMC 3051	289	0	0	0	0	0.0	0.0	0.0	0	0	1.000
DMC 3371	5258	0	0	0	0	0.0	0.0	0.0	0	0	3.000
DMC 3721	177	0	0	0	0	0.0	0.0	0.0	0	0	1.000
DMC 3722	477	0	0	0	0	0.0	0.0	0.0	0	0	1.000
DMC 3770	602	0	0	0	0	0.0	0.0	0.0	0	0	1.000
DMC 3771	1048	0	0	0	0	0.0	0.0	0.0	0	0	1.000
DMC 3776	2930	0	0	0	0	0.0	0.0	0.0	0	0	2.000
DMC 3778	1241	0	0	0	0	0.0	0.0	0.0	0	0	1.000
DMC 3825	818	0	0	0	0	0.0	0.0	0.0	0	0	1.000
DMC 3830	1530	0	0	0	0	0.0	0.0	0.0	0	0	1.000
DMC 3853	1585	0	0	0	0	0.0	0.0	0.0	0	0	1.000
DMC 3856	789	0	0	0	0	0.0	0.0	0.0	0	0	1.000
DMC 3860	442	0	0	0	0	0.0	0.0	0.0	0	0	1.000
DMC 3862	567	0	0	0	0	0.0	0.0	0.0	0	0	1.000
DMC 3863	1502	0	0	0	0	0.0	0.0	0.0	0	0	1.000
DMC 3864	1165	0	0	0	0	0.0	0.0	0.0	0	0	1.000